

The unheard trauma of fatal road crimes in NSW

The ripples of road trauma are felt throughout the NSW community, affecting 1.26 million adults.

6.32M
(100%) **NSW POPULATION AGED 18+**

1.26M
(20%) **ANY ROAD TRAUMA**
Ever experienced the death of someone they personally knew as a result of a road crash (due to a criminal offence or otherwise) on roads in NSW

253K
(4%) **CRIMINAL ROAD TRAUMA**
Ever experienced the death of someone they personally knew as a result of a road crash on roads in NSW due to the **criminal** act of another

126K
(2%) **CRIMINAL ROAD TRAUMA**
Ever experienced the death of a **close** family member or friend as a result of a road crash on roads in NSW due to the **criminal** act of another

Impact of road trauma

\$9b
Road trauma costs the NSW community \$9b per year



81%
of victims families experience **mental health issues** (depression, anxiety, PTSD)



3.5x
more likely to **struggle with rent/mortgage** compared to non-criminal road deaths



32%
have experienced **suicidal thoughts**



Risk factors

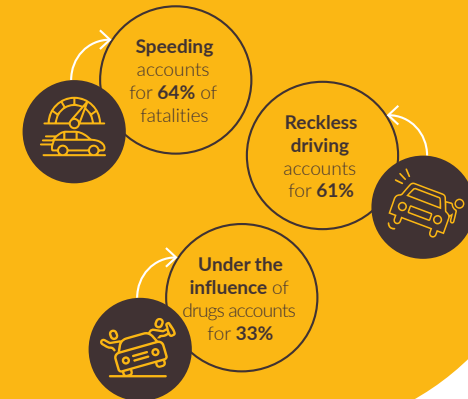
6x
Repeat offenders are more likely to be in a serious or fatal crash



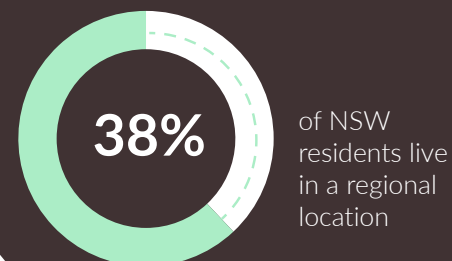
18%
Alcohol played a role in 18% of fatal crashes in 2020



Young drivers are particularly vulnerable



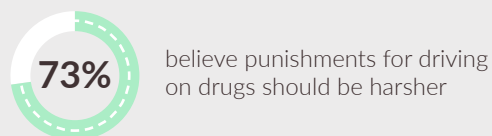
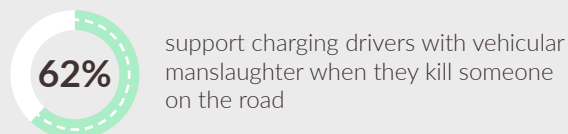
Regional areas are over-represented in criminal road crashes



How can we work together towards zero criminal road deaths and support victims' families?

With NSW Policies

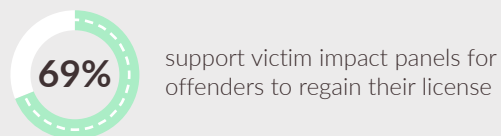
Revisit minimum sentencing requirements



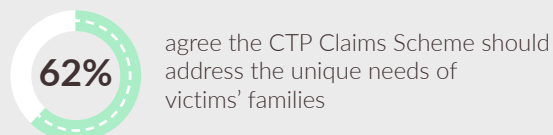
Publish outcomes of crash investigations



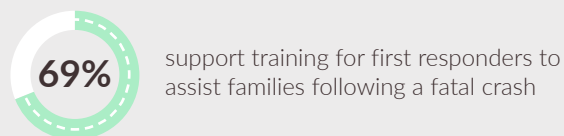
Support victim impact panels



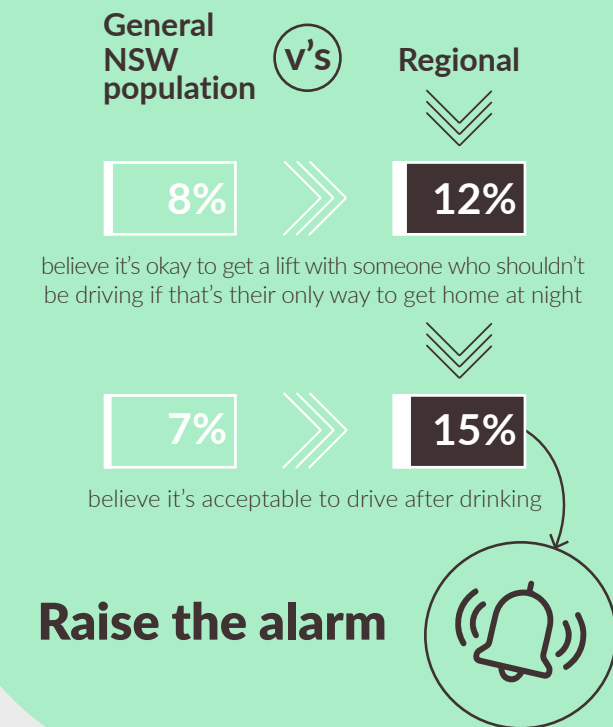
Tailor CTP to suit the needs of the bereaved



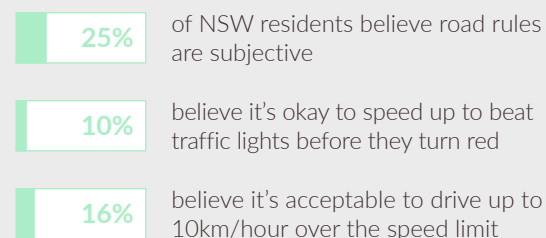
Support for professionals



With the NSW Community

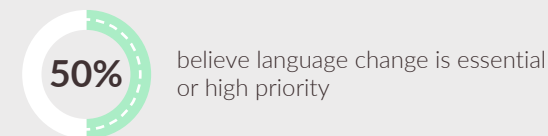


Speak up and step in if someone shouldn't be driving:



With Media

Change the language, refine protocols when reporting on fatal road crashes



- > Obtain family permission before publishing victim names, images and stories
- > Use "crash" instead of "accident" when reporting on road deaths

For families of road trauma victims who require assistance navigating the justice systems contact Road Trauma Support Group NSW for support at 1800 808 384 or email info@rtsgnsw.org.au.



Road Trauma Support Group NSW

fiftyfive5

** RTSG NSW commissioned the expertise of an independent research agency, Fiftyfive5, to research to reality of victims of criminal road trauma

** Study surveyed 2,102 NSW residents and conducted 38 interviews with victims' families and professionals.